

X-U16 Specifications

Version : V1.0

Release date : 2020.01.14

Catalog

Brief Introduction.....	3
About Software.....	3
Characteristics.....	3
Guiding.....	4
Safety Notes.....	4
Function.....	5
Control size.....	5
Flexible communication without wiring.....	5
Multi area arbitrary collocation.....	5
Cluster management.....	6
Timing sending programs.....	6
Timing power on/off.....	6
Test button.....	6
Automatic Correcting Time.....	6
Colorful border and stunt.....	7
Sensor.....	7
Multilingual.....	7
Technical parameters.....	8
Dimension.....	9
Interface.....	10

Brief Introduction

Thanks for ordering LED control card. The design of the control card is according to the international and industrial standard, but if the operations are incorrect, it will probably bring you personal injury and financial harm. As to avoid these and win more from your equipment, please obey the specifications of this file

About Software

Cannot do any modification, decompilation, disassembling, decoding or reverse engineering on our software, it's illegal.

Characteristics

- ◆ On board USB interface , USB transfer distance $\leq 15M$;
- ◆ Support 8 area 128 programs.
- ◆ Synchronous preview on editing;
- ◆ Adjust moving speed of program, more smooth;
- ◆ More convenient operations, more complete software functions;
- ◆ More perfect products design, more detailed on quality;
- ◆ More excellent technology, more outstanding performance;
- ◆ More abundant products series, more perfect solutions;

Guiding

Safety Notes

Input voltage is 5V, voltage range is from 3.3V- 6V please make sure the quality of the power supply of X-W series.

- ◆ Please make sure that all the power supply cables are plugged off when you want to connect or plug off any signal or controlling cables.
- ◆ Please make sure that all the power supply cables and signal cables are plugged off when you need to put in or take off the hardware equipment.
- ◆ Please make sure the environment is clean, dry and ventilated when you use this product, also, do not put this product to a high temperature and wet environment.
- ◆ This product is electronic products, please keep away from fire, water source and flammable&combustible products.
- ◆ There's high pressure components in this products, please do not open the box and repair it by yourself.
- ◆ Turn off the power supply immediately when you find smoking, peculiar smell or something unusual. And contact with us soon

Function

X-U16 is one of the X-U series products. It has the characteristics of high integration, high signal sensitivity, fast data transmission speed, easy structure installation, use and maintenance. The product uses USB disk to upload program information to LED display screen, which is easy to install and free of wiring. X-U series products are suitable for LED lintel display and LED cluster display system of various medium and large areas. The product load index and display effect are greatly improved, with more functions and more complete series.

Control size

Based on powerful hardware platform the product, support large LED display, single color ≤ 128K : 2048*64、1024*128、672*192、512*256 , 双色≤64KPixels : 1024*64、512*128、336*192、256*256 , with a maximum width 2048 pixels , the control area of flexible and abundant display function.

Flexible communication without wiring

On board 1 nos 50pin interfaces ,users can upload program information to the LED display screen using the U disk, which is convenient to install and free of wiring. It is a very good choice for the cluster display system with scattered installation points or the application occasions with high wiring cost.

Multi area arbitrary collocation

Support multi content display,use can add Image/text/animation/lunar calendar/digital clock/analogue clock/timer/temperature/temperature & humidity/noisy,ect then rolling display these collocation contents

Cluster management

Through a stable and efficient network control mode, users can seamlessly connect multiple LED screens which was distributed in different regions remote centralized management and maintenance, cluster release programs. In addition to send programs with the cluster, but also cluster settings boot, shutdown, correction time , time switch and brightness adjustment ect. Which can reduce the time user operation and management of the LED screen , greatly improve their work efficiency

Timing sending programs

Supporting send programs regularly, users only need to set the time of the program in the software, and the program will send the program exactly according to the set time.

Timing power on/off

The Ledshowtw software has the function of timer switch. After setting the boot and shutdown time, the computer will automatically turn on and turn off on time, so that we can make reasonable use of manpower and material resources, and greatly improve the service life and reliability of the display. When the user is inconvenient to operate on the side of the computer, the timing switch-gear can better realize the unattended function.

Test button

With the increases of use time , the quality of the screen will also change. Therefore, the large LED screen needs regular display quality detection and correction. The product has the function of self testing screen, the Users just need to flow simple operation steps, It can complete the brightness of the screen , color detection, enabling customers to keep tracking of each LED the life of the screen.

Automatic Correcting Time

The system will automatically correction time according to the real-time time,just like the mobile phone and the computer, so that there is no need to manually calibrate the time and place the places that need not be specially installed to the LED display, it can automatically correction the time, so as to ensure the uniformity of the time of all display terminals at any time.

Colorful border and stunt

The Ledshowtw software has build-in colorful border and super stunt, as guest editor broadcast programs provide rich and colorful eye-catching border and cool exciting stunt change. A variety of colorful border to meet customer needs and different editing applications, greatly improving the broadcast effect of the program.

Sensor

X-W series on-board temperature, humidity, brightness sensor interface, can accurately measure and display the temperature, humidity, brightness value. Provide accurate and accurate data reference for customers in places where temperature, humidity or noise need to be strictly controlled,so as to avoid unnecessary losses caused by improper temperature, humidity or noise control.

Multilingual

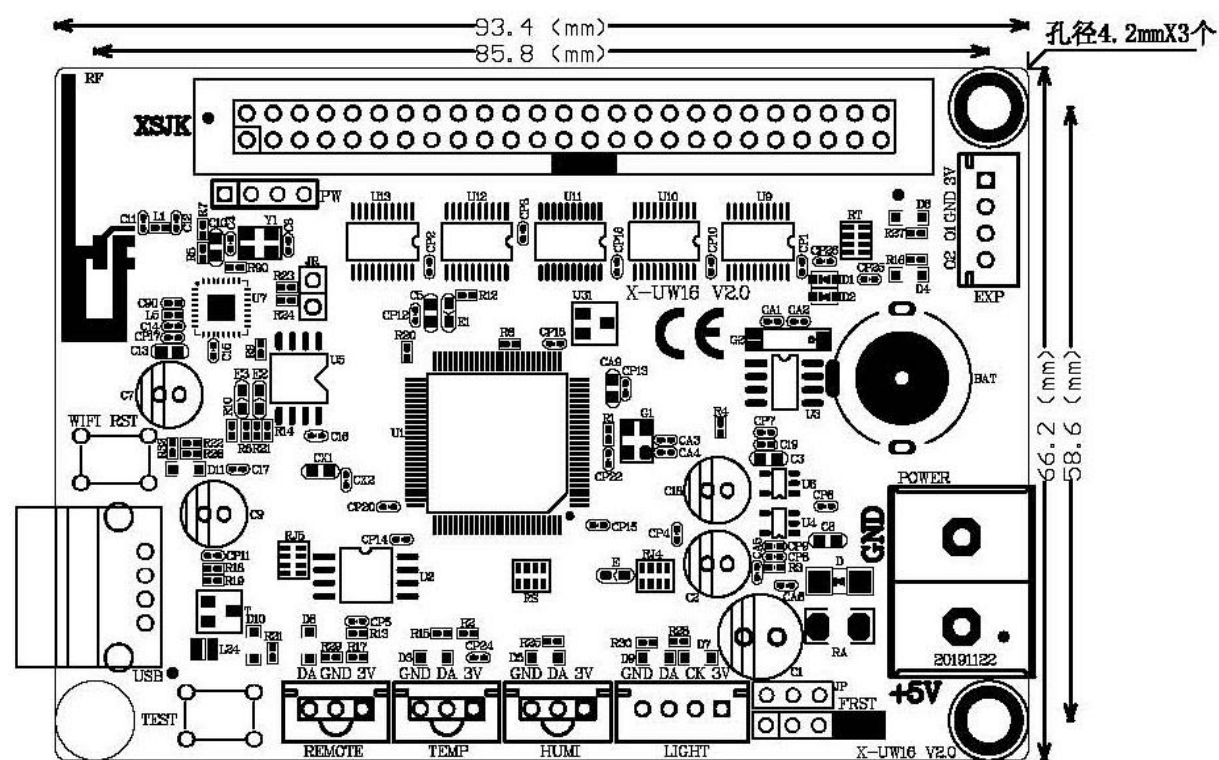
The system includes many kinds of font, such as multiple simplified Chinese text and traditional font, the software supports over 20 languages, such as English,Korean, Japanese, Greek, French and so on. The product is suitable for users from all over the world.

Technical parameters

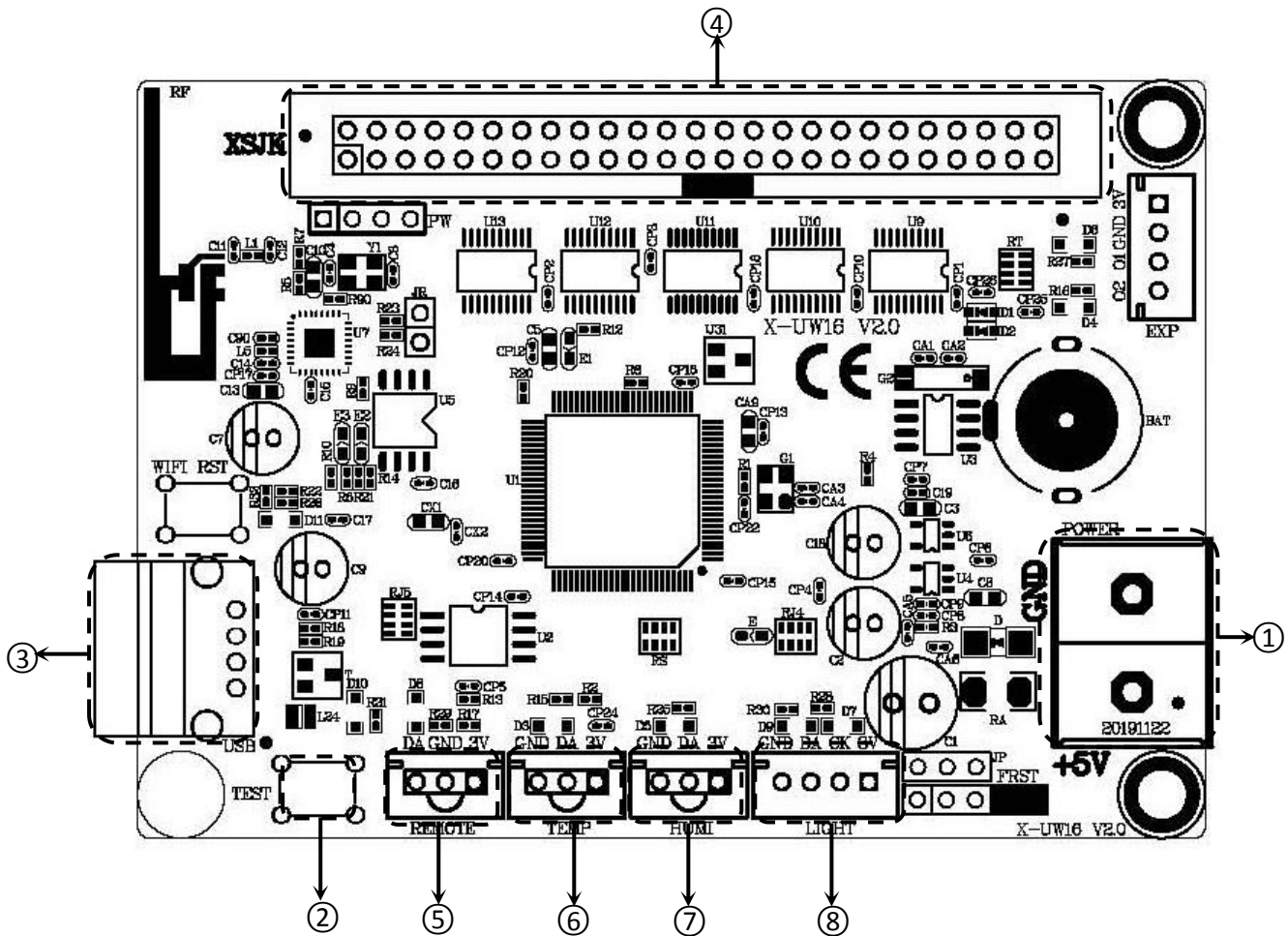
Technical parameters	
Control area	Single color 128K Pixels : 2048*64、1024*128、672*192、512*256
	Dual color 64K Pixels : 1024*64、512*128、336*192、256*256
Memory storage	2MByte
Screen types	All kinds of single , double,tri colors LED screen
Program quantity	Screens cluster management/multi-program/multi-areas display/multi-languages
Program types	Normal/Shared program
Program quantity	Support 128 programs,8 areas for each program
Area type	Image/text/animation/lunar calendar/digital clock/analogue clock/timer/temperature/
Frame mode	Most advanced colorful / magic graphics frame/Area frame
Communication method	USB
communication interface	1 nos 50PIN
Sensor	Temperature /humidity/noise
Remote control	Remote control program/lock screen/brightness adjustment/power on/off /screen test
Bright regulation	16 grades brightness, manual and auto-timing adjustment/remote control
Remote ON/OFF	Auto-timing powered on/off /software power on & off/remote power on&off

Details	
Input power supply	5V (3.5V ~ 6V) , Please make sure the quality of power supply.
Power Dissipation	≤2W
Temperature	-40℃ ~ 80℃

Dimension



Interface



Interface		
1	Power	5Vpower interface ,DC volts, standard 5V ,support 3.5V ~ 6V)
2	TEST	Test button
3	USB	U interface , Support usb disk upload program
4	50PIN	50PIN (XSJK)
5	REMOTE	IR controller interface

6	TEMP	Temperature interface
7	HUMI	Temp&Humi interface
8	LIGHT	Brightness sensor interface

Contact Us

Shanghai ONBON Technology Co.,ltd (Headquarters)

Address: 7 Floor, Tower 88, 1199#, North Qinzhou Road, Xuhui District, Shanghai City, China

Tel Phone: 086-21-64955136

Fax: 086-21-64955136

Website: www.onbonbx.com

ONBON (Jiangsu) Optoelectronic Industrial Co.,LTD

Address: 1299#, Fuchun Jiang Road, Kunshan City, Jiangsu Province, China

Sales Contacts

Tel: 0086-15921814956 0086-15800379719

Email: onbon@onbonbx.com

Second Development

Tel: 0512-66589212

Email: dev@onbonbx.com

iLEDCloud

Website: <http://www.iledcloud.com/>



Public Wechat



ONBON APP